

*Series Editor*  
*Jean-Charles Pomerol*

---

# **Corporate Talent Detection and Development**

---

Yves Richez

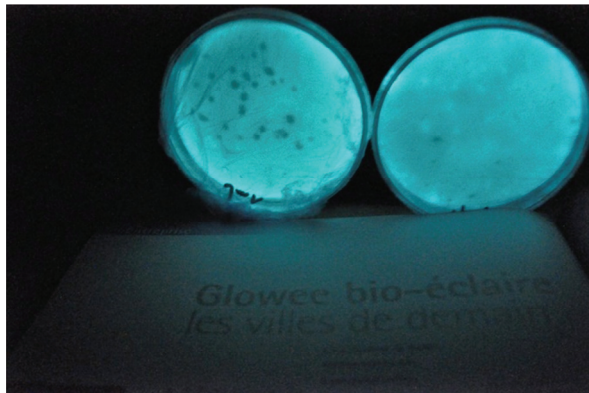
Color section



**Figure 5.1.** Wheel of MO.O.N.s with correlations (Cor) and coherences (Coh)



**Figure 7.1.** *Célia Granger*



**Figure 12.1.** *Glowee bio-lighting* (source: [www.glowee.fr/](http://www.glowee.fr/))



**Figure 13.1.** *Platypus*<sup>1</sup>



**Figure 13.2.** *Senescence of a Glutinous Alder leaf*

---

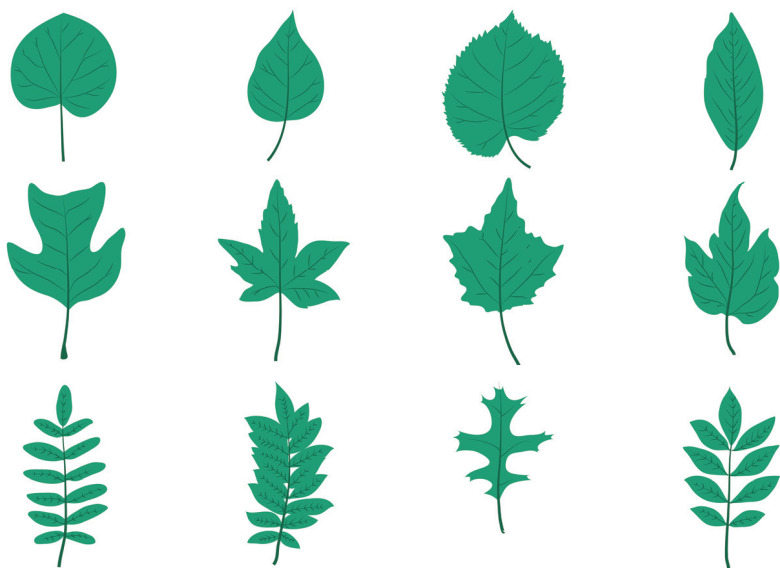
<sup>1</sup> Illustration from Anthony Wolff.

Date	Zone 1 (central triangle)			Zone 2 (top left triangle)			Zone 3 (bottom left triangle)		
13/09/2014	C	68		C	56		C	63	
	M	37		M	44		M	22	
	J	94		J	100		J	78	
	N	24		N	28		N	4	
	# <sup>2</sup>	516d3e		#	586c34		#	677a63	
14/09/2014	C	58		C	59		C	51	
	M	32		M	36		M	31	
	J	88		J	99		J	68	
	N	13		N	18		N	7	
	#	6f834d		#	6a783e		#	83916c	
18/09/2014	C	48		C	41		C	40	
	M	31		M	32		M	29	
	J	95		J	100		J	68	
	N	8		N	6		N	3	
	#	8c904b		#	9b9342		#	9f9d71	
19/09/2014	C	45		C	47		C	40	
	M	28		M	36		M	32	
	J	96		J	96		J	72	
	N	5		N	12		N	5	
	#	94984c		#	898 444		#	9e9768	
20/09/2014	C	47		C	47		C	42	
	M	35		M	53		M	51	
	J	96		J	88		J	70	
	N	11		N	31		N	19	
	#	8a8645		#	705b37		#	896d55	
21/09/2014	C	45		C	53		C	44	
	M	49		M	61		M	58	
	J	91		J	72		J	71	
	N	24		N	47		N	30	
	#	7e683b		#	544 236		#	765 846	

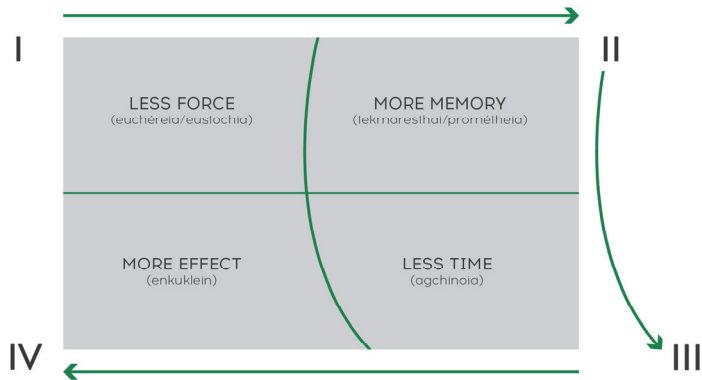
**Table 13.1. Observation of the transformation of an Alder leaf (seasonal cycle)<sup>3</sup>**

<sup>2</sup> Corresponds to the code by which a hue is found.

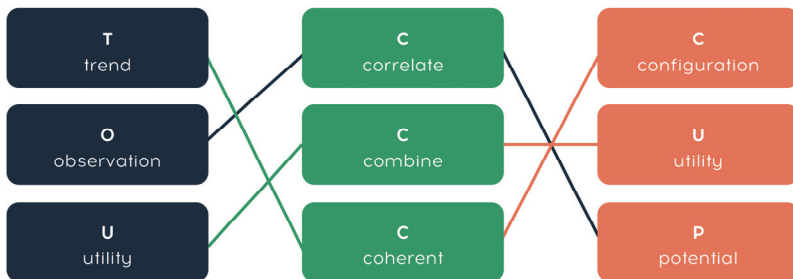
<sup>10</sup> Study of the colors of a Glutinous Alder leaf (senescence process): PANTONE solid coated.



**Figure 13.3.** Leaf shapes, appreciation training (ji)<sup>11</sup>



**Figure 14.1.** *Economy and efficiency of the metis*



**Figure 17.1.** *Thinking of talent dynamics*

1 CUP h <sup>f</sup> <b>Ex</b> T-M Exponential	2 CUP h <b>In<sup>tr</sup></b> A-A Independent	3 CUP h <b>In<sup>te</sup></b> E-I Independent	4 CUP h <b>Ki</b> M-G Resonance	5 CUP f <sup>h</sup> <b>Sp</b> E-E Symbol	
6 CUP f <sup>h</sup> <b>Mu</b> R-T Maslov	7 CUP f <b>Li</b> P-F Lagrange	8 CUP f <b>Ma</b> A-G Mathematic	9 CUP f <sup>h</sup> <b>Sc</b> C-P Scientific	10 CUP f <sup>h</sup> <b>Na</b> T-C Nomenclature	11 CUP X X-X

**Table A.1.** *Dynamic table of MO.O.N.s*

C <sup>or</sup>	1 Ex	2 In <sup>tr</sup>	3 In <sup>te</sup>	4 Ki	5 Sp	6 Mu	7 Li	8 Ma	9 Sc	10 Na
-----------------	---------	-----------------------	-----------------------	---------	---------	---------	---------	---------	---------	----------

**Table A.2.** *Correlation table*

C <sup>oh</sup>	10 Na Ex 1	2 In <sup>tr</sup> In <sup>te</sup> 3	4 Ki Sp 5	6 Mu Ma 7	8 Li Sc 9
-----------------	------------------	---	-----------------	-----------------	-----------------

**Table A.3.** *Coherence table*