

**Smart Innovation Set**

coordinated by  
Dimitri Uzunidis

Volume 12

---

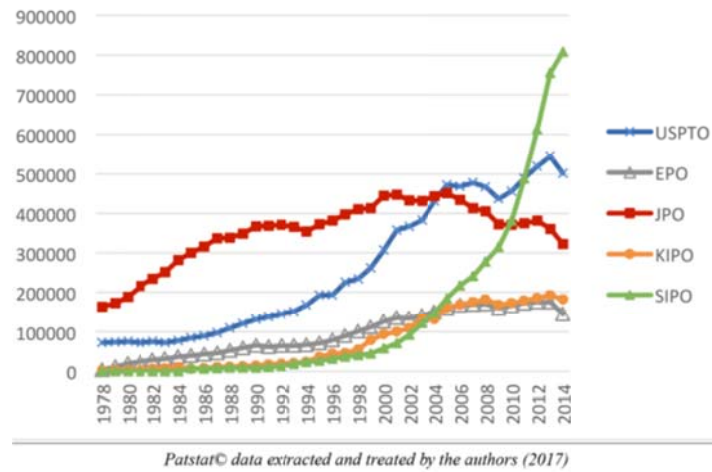
**Patents**

---

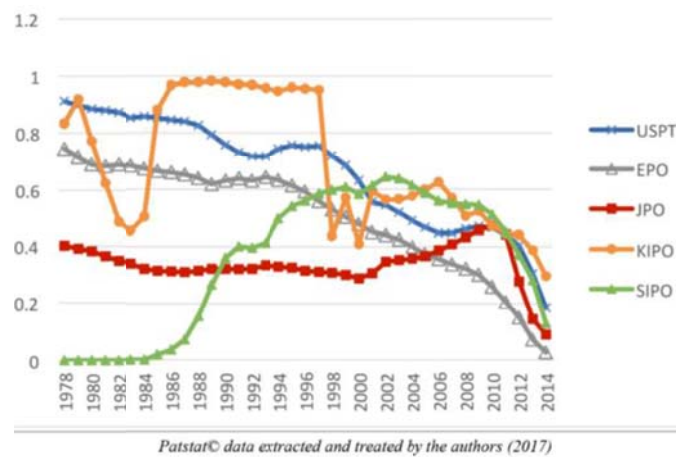
*Prompting or Restricting Innovation?*

Marc Baudry  
Béatrice Dumont

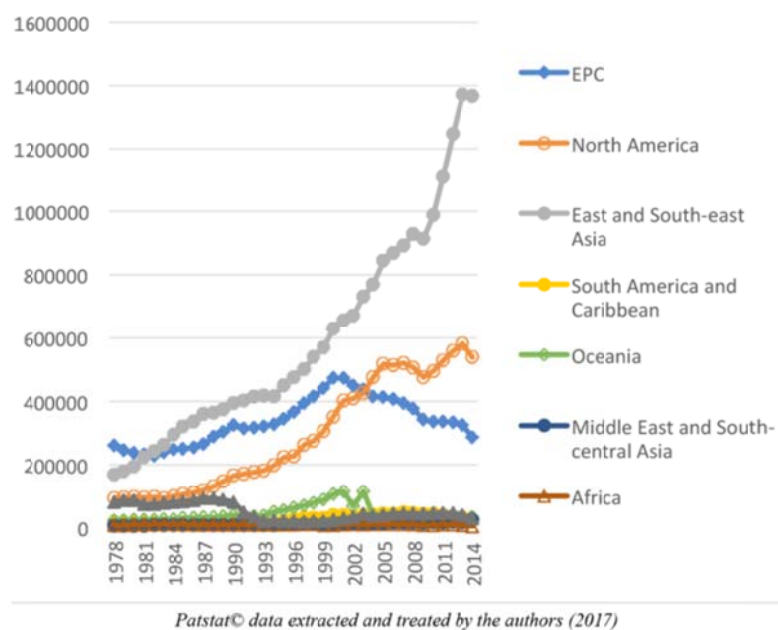
Color section



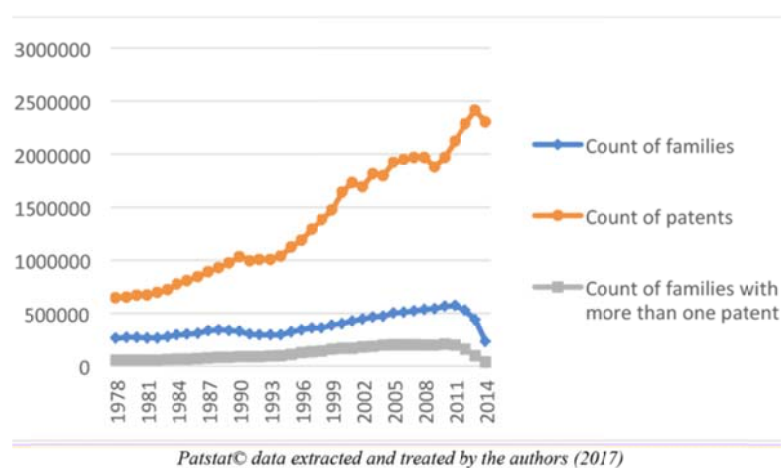
**Figure 2.1.** Evolution of the number of patent requests at five main offices globally  
(Source: Patstat© data extracted and treated by the authors (2017))



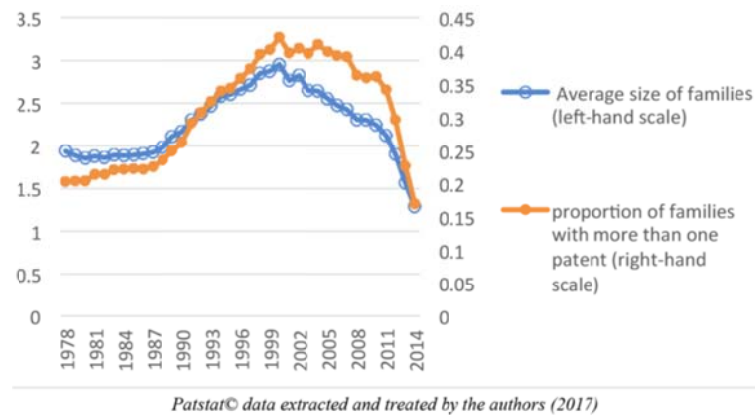
**Figure 2.2.** Evolution of success rates for patent requests at five main offices globally  
(Source: Patstat© data extracted and treated by the authors (2017))



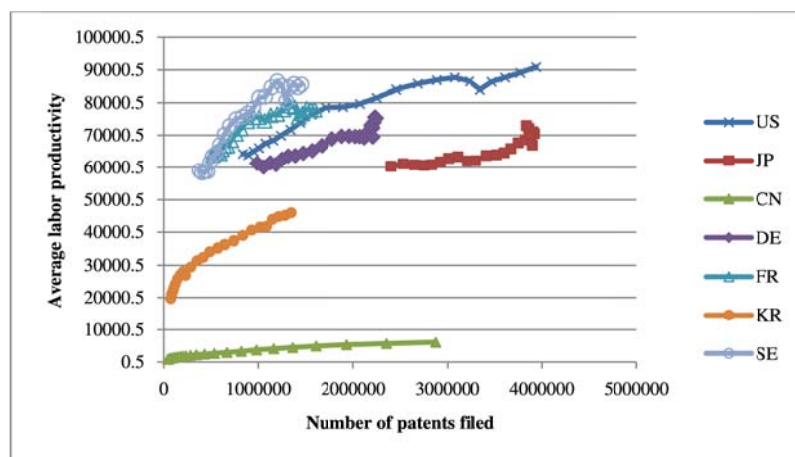
**Figure 2.3.** Evolution of patent requests by geographical area  
(Source: Patstat© data extracted and treated by the authors (2017))



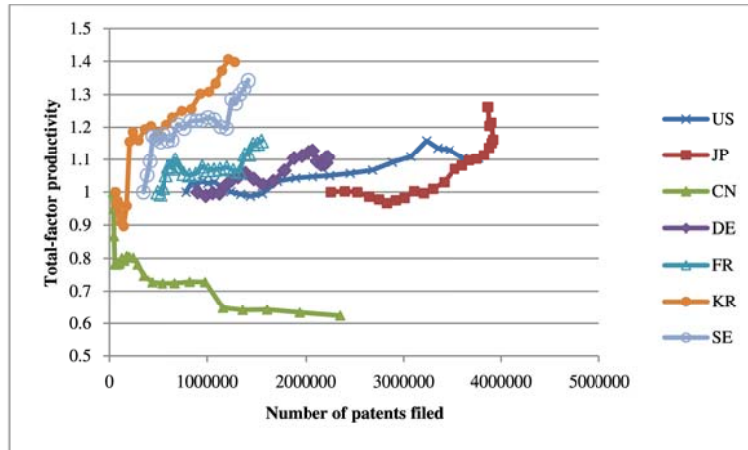
**Figure 2.4.** Evolution of the number of patent families worldwide (Source: Patstat© data extracted and treated by the authors (2017))



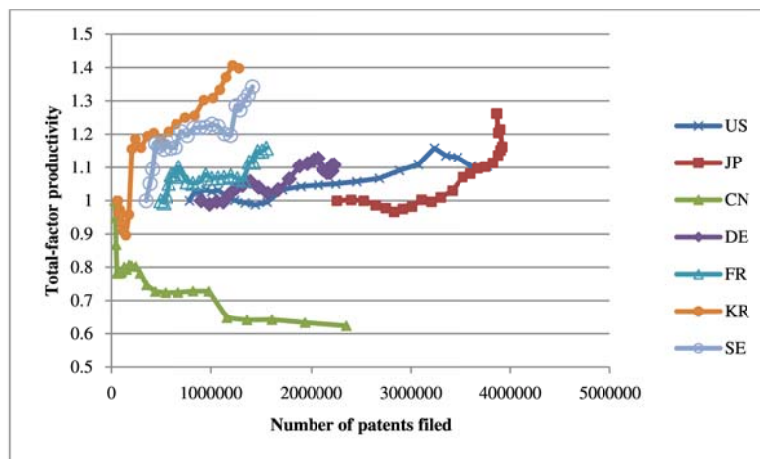
**Figure 2.5.** Evolution of the composition of patent families worldwide  
(Source: Patstat© data extracted and treated by the authors (2017))



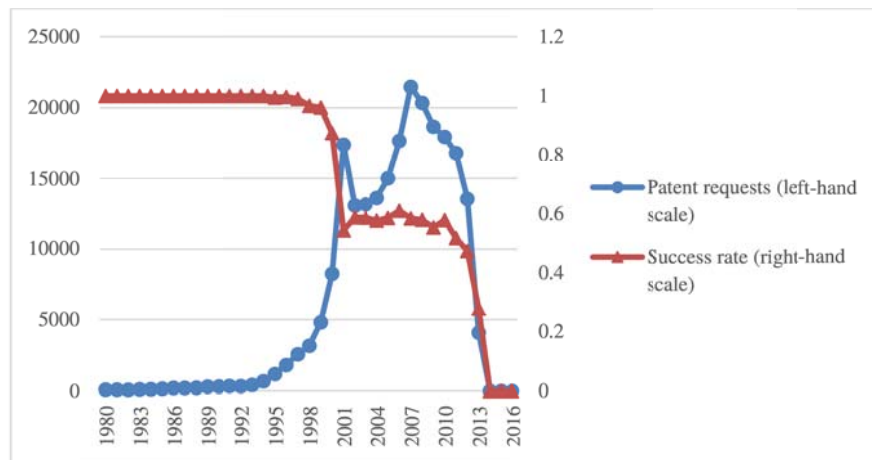
**Figure 2.6.** Co-evolution of patents filed and average labor productivity  
(Source: Patstat© data extracted and treated by the authors (2017) and OECD iLibrary data)



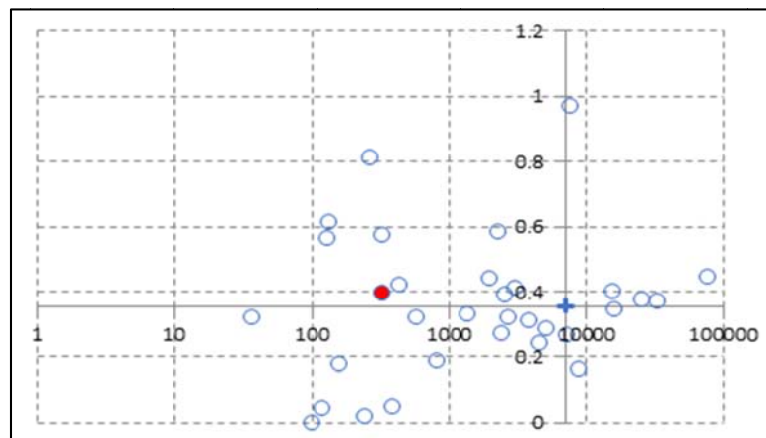
**Figure 2.6.** Co-evolution of patents filed and average labor productivity  
(Source: Patstat© data extracted and treated by the authors (2017) and OECD iLibrary data)



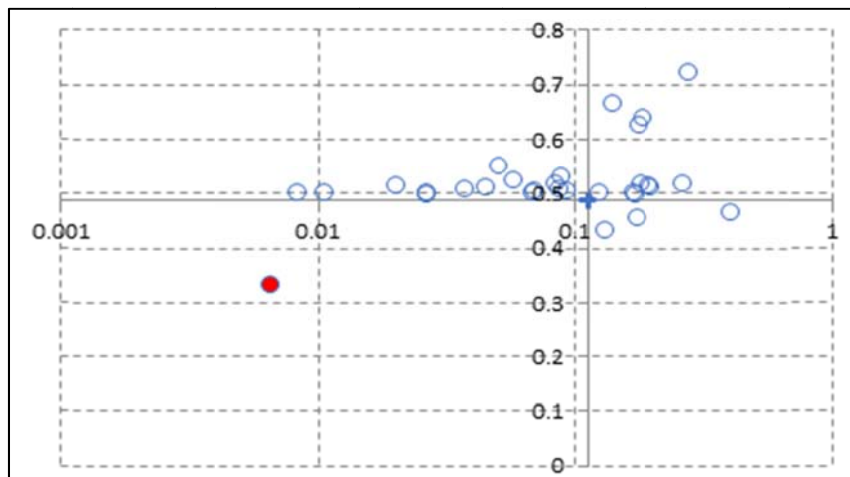
**Figure 2.7.** Co-evolution of patents filed and total-factor productivity  
(Source: Patstat© data extracted and treated by the authors (2017) and OECD iLibrary data)



**Figure 2.9.** Evolution of patent requests from the USPTO and the success rate for class 705 (Source: Patstat© data extracted and treated by the authors (2017))



**Figure 4.2.** Ratio of multi-patent families (vertical axis) as a function of the number of families (horizontal axis, logarithmic scale) for automobile manufacturers from 2006 to 2016 (Source: Patstat© data extracted and treated by the authors (2017))



**Figure 4.3.** Average part of partners in families with co-patents (vertical axis) as a function of the ratio of families with co-patents (horizontal axis, logarithmic scale) for automobile manufacturers from 2006 to 2016 (Source: Patstat© data extracted and treated by the authors (2017))